

**GSDMDC1 Antibody (monoclonal) (M01)****Mouse monoclonal antibody raised against a full length recombinant GSDMDC1.****Catalog # AT2269a****Specification**

---

**GSDMDC1 Antibody (monoclonal) (M01) - Product Information**

Application	WB, IHC, IF, E
Primary Accession	<a href="#">P57764</a>
Other Accession	<a href="#">BC008904</a>
Reactivity	Human
Host	mouse
Clonality	Monoclonal
Isotype	IgG1 kappa
Calculated MW	52801

**GSDMDC1 Antibody (monoclonal) (M01) - Additional Information****Gene ID** 79792**Other Names**

Gasdermin-D, Gasdermin domain-containing protein 1, GSDMD, DFNA5L, GSDMDC1

**Target/Specificity**

GSDMDC1 (AAH08904, 1 a.a. ~ 484 a.a) full-length recombinant protein with GST tag. MW of the GST tag alone is 26 KDa.

**Dilution**

WB~~1:500~1000

IHC~~1:100~500

IF~~1:50~200

E~~N/A

**Format**

Clear, colorless solution in phosphate buffered saline, pH 7.2 .

**Storage**

Store at -20°C or lower. Aliquot to avoid repeated freezing and thawing.

**Precautions**

GSDMDC1 Antibody (monoclonal) (M01) is for research use only and not for use in diagnostic or therapeutic procedures.

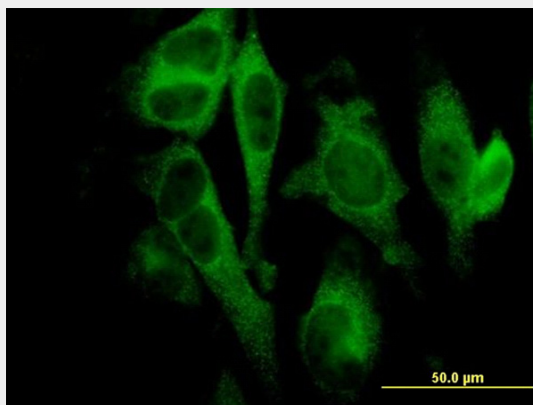
**GSDMDC1 Antibody (monoclonal) (M01) - Protocols**

Provided below are standard protocols that you may find useful for product applications.

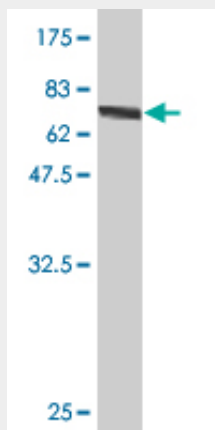
- [Western Blot](#)

- [Blocking Peptides](#)
- [Dot Blot](#)
- [Immunohistochemistry](#)
- [Immunofluorescence](#)
- [Immunoprecipitation](#)
- [Flow Cytometry](#)
- [Cell Culture](#)

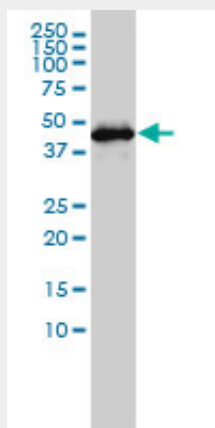
## GSDMDC1 Antibody (monoclonal) (M01) - Images



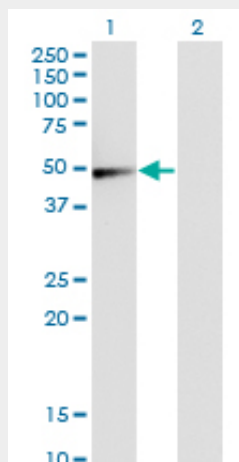
Immunofluorescence of monoclonal antibody to GSDMDC1 on HeLa cell. [antibody concentration 10 ug/ml]



Antibody Reactive Against Recombinant Protein. Western Blot detection against Immunogen (78.98 KDa) .

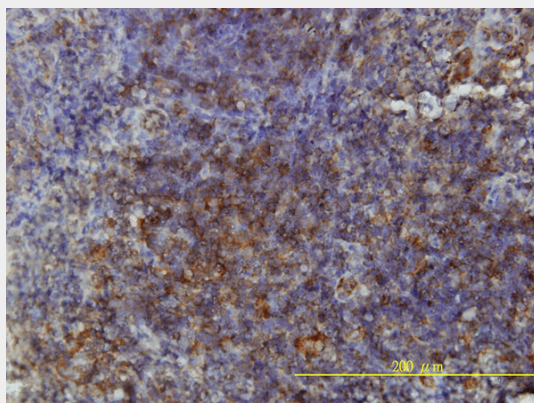


GSDMDC1 monoclonal antibody (M01), clone 3F12-1B2 Western Blot analysis of GSDMDC1 expression in Jurkat (Cat # AT2269a)

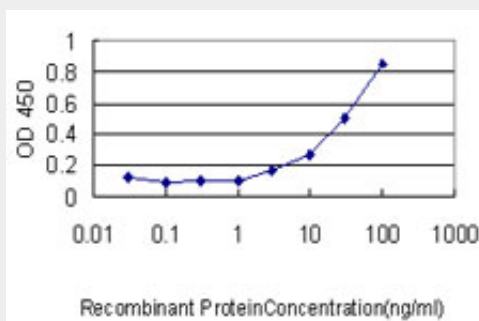


Western Blot analysis of GSDMD expression in transfected 293T cell line by GSDMDC1 monoclonal antibody (M01), clone 3F12-1B2.

Lane 1: GSDMD transfected lysate (Predicted MW: 52.8 kDa).  
Lane 2: Non-transfected lysate.



Immunoperoxidase of monoclonal antibody to GSDMDC1 on formalin-fixed paraffin-embedded human tonsil tissue. [antibody concentration 3 ug/ml]



Detection limit for recombinant GST tagged GSDMDC1 is approximately 0.3ng/ml as a capture antibody.

### **GSDMDC1 Antibody (monoclonal) (M01) - Background**

Gasdermin D is a member of the gasdermin family. Members of this family appear to play a role in

regulation of epithelial proliferation. Gasdermin D has been suggested to act as a tumor suppressor. Alternatively spliced transcript variants have been described.

#### **GSDMDC1 Antibody (monoclonal) (M01) - References**

Distinctive expression and function of four GSDM family genes (GSDMA-D) in normal and malignant upper gastrointestinal epithelium. Saeki N, et al. *Genes Chromosomes Cancer*, 2009 Mar. PMID 19051310. Members of a novel gene family, Gsdm, are expressed exclusively in the epithelium of the skin and gastrointestinal tract in a highly tissue-specific manner. Tamura M, et al. *Genomics*, 2007 May. PMID 17350798. DNA sequence and analysis of human chromosome 8. Nusbaum C, et al. *Nature*, 2006 Jan 19. PMID 16421571. Immunoaffinity profiling of tyrosine phosphorylation in cancer cells. Rush J, et al. *Nat Biotechnol*, 2005 Jan. PMID 15592455. The status, quality, and expansion of the NIH full-length cDNA project: the Mammalian Gene Collection (MGC). Gerhard DS, et al. *Genome Res*, 2004 Oct. PMID 15489334.

#### **GSDMDC1 Antibody (monoclonal) (M01) - Citations**

- [Overexpression of gasdermin D promotes invasion of adenoid cystic carcinoma](#)